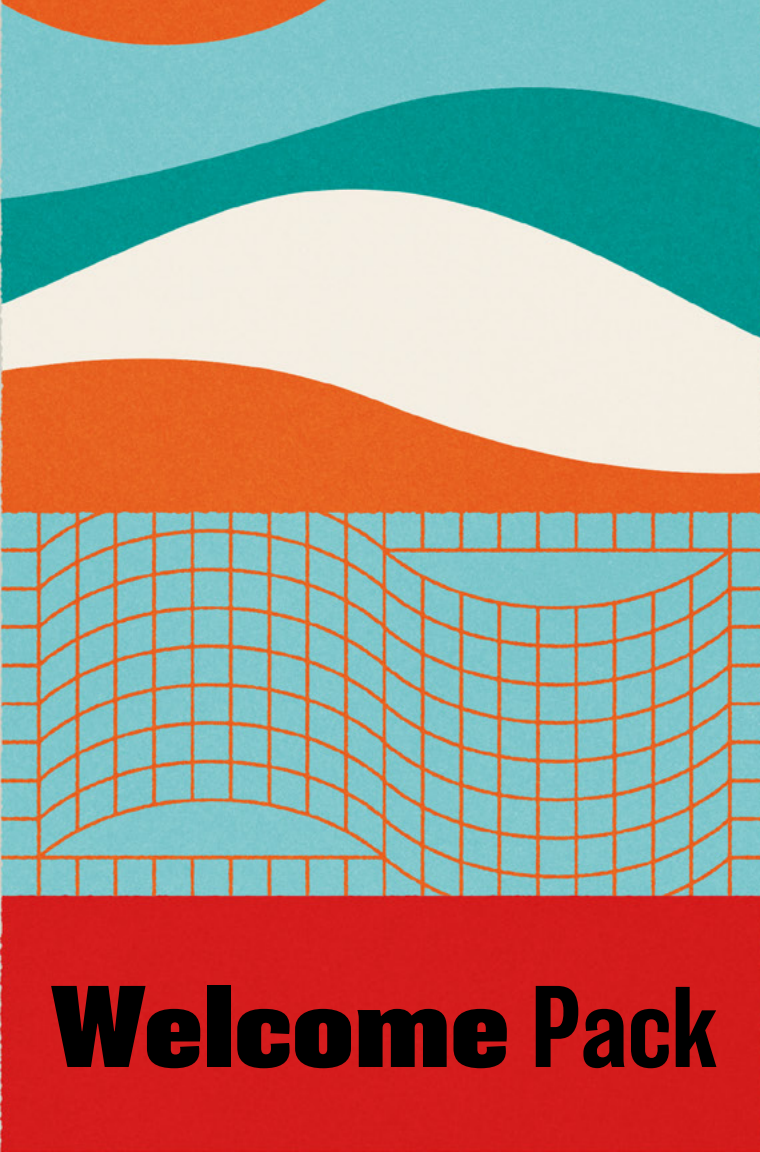




THE
GRID
EXPERIENCE



Welcome Pack



What is The Grid Experience?

The Grid Experience is an exciting new project exploring movement and shared spaces.

We created The Grid Experience in response to people experiencing a physical and social disconnect as a result of the lockdown. We know this can have a profound effect on mental health and wellbeing.

Dance and movement is a great way to combat this, so we have created an unique and safe way to do so.

🎬 Watch the teaser at zoielogic.co.uk/grid

Who can do it?

The Grid Experience is designed for anyone who is up for getting creative, safely sharing space with others, and having fun. The Grid space is accessible and designed within Covid-19 secure physical distancing guidelines.

The participants bring The Grid to life. To sign up your Grid participants, you can target a wide range of ages and abilities in your community, no dance experience is required. Together, we can discuss ideas and share learning to help shape your recruitment process.

The Grid space is designed to be accessible and fit within Government guidelines at all times. We've partnered with the experienced team at Rees Leisure, who run large sports events in the south of England and who know all there is to know about making outdoor events safe and accessible.





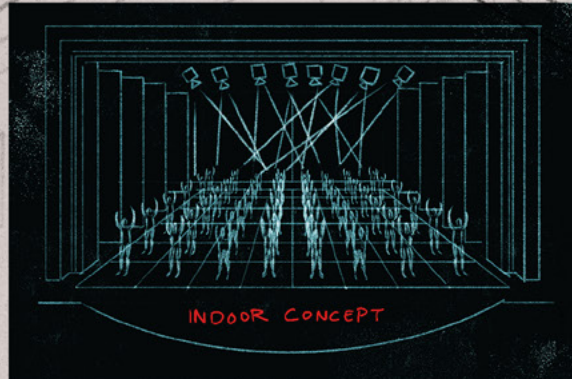
MOCK UP DESIGN FOR
MAYFLOWER THEATRE
EVENT

THE FLOOR COMES
IN SEPARATE ROWS
OF 8 SQUARES

THE SPACE BEFORE AND
AFTER SETUP



GOOD AMOUNT OF
SPACE OUTSIDE TO GATHER



INDOOR CONCEPT

FIG.06
FLOOR
DESIGN



THE OUTDOOR
SPACE IS
COMPLETELY
ENCLOSED

ENTRANCE
AND EXITS

FIG.04 PATTERN

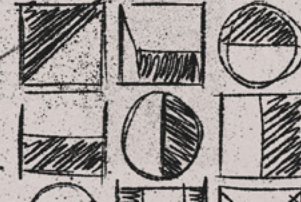


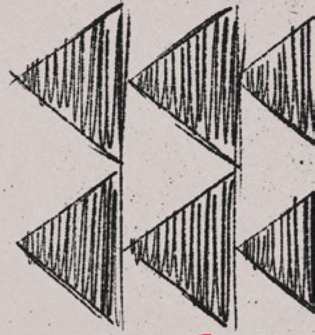
FIG.01
BARRIER
PATTERN

THE GRID EXPERIENCE WELCOME PACK

Where can it be held?

The Grid Experience was originally designed for large open spaces, but it is also adaptable to indoor spaces and theatre stages. The grid itself is built for flexibility, which means it can expand and contract to fit the intended space. All participants will be situated in their own 2x2m square, within a safe perimetered area.

FIG.08
BARRIER
PATTERN



Our offer to you...

Artistic Preparation

- Artistic adaptations for space and participants
- Bespoke site design

Full Event and Site management

- Site visits
- Communications with your local authority, stakeholders and suppliers
- Licencing
- Site set up and clearing

Full project Management

- Engagement consultancy to reach your desired participants
- Bespoke marketing and comms assets
- Management of participant comms: Pre-event, during and post-event
- Organisation and delivery of online workshops (x8)
- 1 Bespoke workshop for a local dance company of your choosing
- Evaluation planning with you: Devising methods, delivery, gathering methods, analysis and reporting
- Filming and event capture



A few technical details...

Running time: 1.5 hours total

Spaces: The grid requires a relatively flat surface area hard or soft standing, ideally with access to power.

Staffing: For an **outdoor** Grid Experience, we require 2 persons to help with setup, crowd support and pack down. **Indoor** Grid requires at least two venue technicians, competent in lighting, sound and staging, exclusively available for the duration of get in and event.

Set up: Set up will happen on event day, starting with perimeter fencing, followed by the construction of your desired grid layout. We require a minimum of 5 hours to set up pre participants arriving. **Indoor** Grids require a pre-production day for LX/AV setup.

Rehearsals: All rehearsals are delivered online via zoom and each participant receives a demonstration video two weeks prior to the event day.

Pre-rig: For an **outdoor** event, no pre-rig will be needed. All site requirements e.g barriers and equipment are managed by ZLDT events team. An **indoor** Grid Experience will

require venue lighting rigged in advance of the event day, on a pre production day (if possible) a LX/AV plan will be provided.

Flooring: Our flexible flooring can allow different grid sizes, tailor made for the size of the site. All participants will be situated in their own 2x2m square as to fit with government guidelines.

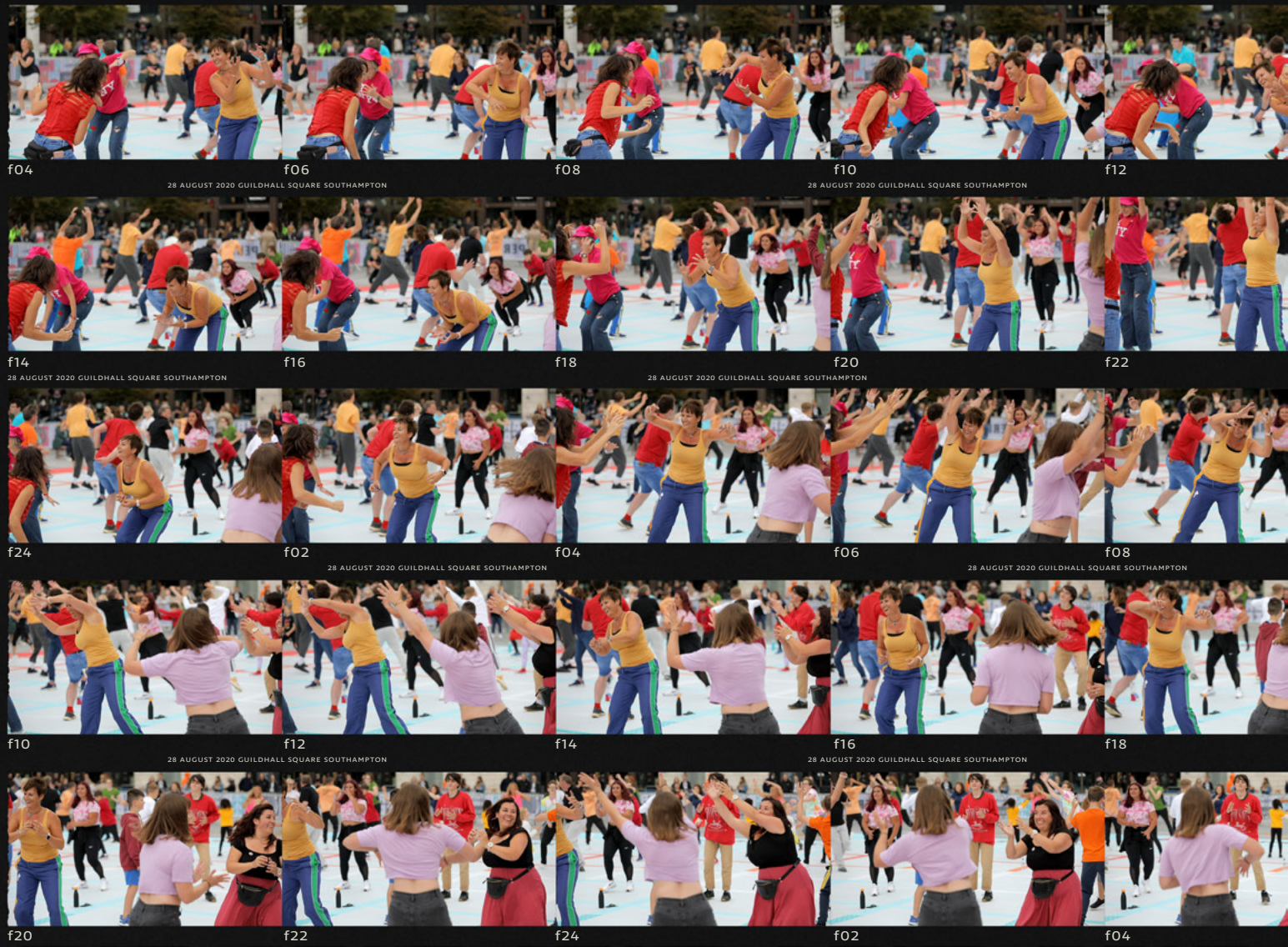
Need any technical questions answered?
To discuss any technical details, you can get in contact with Ben Larkin, our Production Manager at ben@zoielogic.co.uk

“The experience created
a real sense of
community as we
worked together through
movement and interaction”

— Participant in the pilot event

“Your crazy concept was
brilliant and simulating
exactly how we all felt about
the joy of dancing
with others again!”

— Participant in the pilot event





A bit about us...

We are ZoieLogic Dance Theatre. We challenge the perceptions of dance, who it's for, where and how it is shown.

We want as many people to experience dance as possible; to see it, be in it and help make it. We make shows and projects for you and create unforgettable experiences with you.

👉 Visit zoielogic.co.uk to find out more or you can also find us on... [f](#) [i](#) [t](#) /zoielogic

What's next...?

To discuss bringing The Grid
Experience to your area or to ask
any further questions - please email
Zoie Golding (zoie@zoielogic.co.uk)

👉 Visit zoielogic.co.uk/grid to find out more

You can also find us on... [f](#) [@](#) [/zoielogic](#)



We are supported by Arts Council England, Esmée Fairbairn Foundation and Paul Hamlyn Foundation, Company in Residence at MAST (Mayflower Theatre)

In association with Mayflower Theatre, Brewhouse Theatre & Arts Centre and Pavilion Dance South West

© 2021 ZoieLogic Dance Theatre (Community Interest Company 08580006)



Supported using public funding by

**ARTS COUNCIL
ENGLAND**

